



**Violapalooza Community Telemann Concerto play-along**  
**with violists Jonathan Bagg, Sam Gold, Scott Rawls and Suzanne Roussio.**  
**Questions: email Suzanne Roussio [suzanne@mallarmemusic.org](mailto:suzanne@mallarmemusic.org)**

Hi, we are thrilled you are considering joining us for our viola play-along! Below are a few pieces of information that may help. The Telemann is a work that most violists study early in their progression and is universally beloved!

We welcome players that are at least at a medium-advanced level and 16 years and older. Because there is not a lot of rehearsal time, players should be able to play the solo part at the suggested tempos and know how it fits with the accompaniment.

All amateur and student participants must attend the rehearsal on Sept 2. Professional players are welcome to attend the rehearsal but may opt to only attend the concert. We ask that everyone please register at <https://app.arts-people.com/index.php?class=mmcp>. The registration fee is \$20 which includes a ticket to the concert for yourself. Additional tickets and information about the concert may be found: <https://www.mallarmemusic.org/event/series-concert-violapalooza/> A discount code for 20% off single tickets for friends and family will be sent to you after you enroll.

1. Rehearsal: Saturday, Sept 2, 3:00 pm – 4:30 pm @ Nelson Music Room, Duke East Campus, Durham. [map](#)
2. Performance: Sunday, Sept 3, 3:00 pm, Nelson Music Room. The Telemann will be performed right after intermission @ 4:00 pm
3. Please use the music provided to you via PDF, bring your own copy, a pencil AND music stand to the rehearsal. You may end up sharing with someone there, but it is best to be prepared!
4. We are performing the Telemann Viola Concerto in G Major, TWV 51:G9, movements 1. *Largo* and 2. *Allegro*. You will be accompanied by a viola quartet playing the tutti parts.
5. We will perform this in a baroque style, meaning minimal vibrato and the use of open strings when possible. Trills in the first movement all start from above the note. Tempos are marked on the part.
6. The following videos are suggested as far as style. The tempo in the 2<sup>nd</sup> movement for both videos is faster than we will take it. Know that the bowings in the videos are not the same as on the sheet music we provide.

<https://www.youtube.com/watch?v=WX4W-SD8Qdk> (Bremer Baroque – please note that this is in baroque pitch A=415)

<https://www.youtube.com/watch?v=gFGP8ZjQViY> (Frankfurt Radio Symphony)

Viola concertante

# Konzert G-Dur

bearbeitet für Solo-Viola und Violensemble

Arr.: Armin Behr

Violapalooza play-along

G. Ph. Telemann  
TWV 51:G9

$d = 60$

I

*Largo*

*Va I*

6

(f)

12

18

A

2

25

29

B

3

37

43

(ad. lib.)

6

46

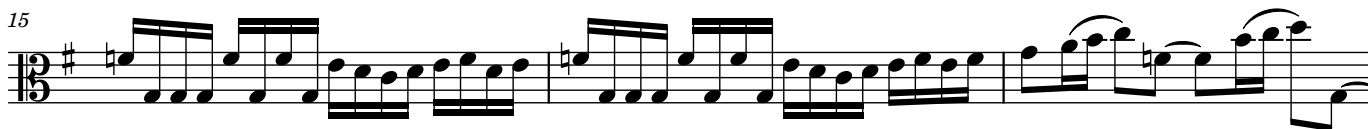
C

8

*Allegro*

Va I

(f)



47

50

54

57

60 **F**

62

64

67

66

71

74

Fine

CUT

tutti

f

←